

A vibrant, abstract background featuring a large splash of fine particles in shades of yellow, orange, red, purple, and blue, radiating from the left side towards the right.

WanTech

萬鋒電機設備型錄 Product Info

Made in TAIWAN
台灣製造 FORMOSA



萬鋒電機設備目錄 Wantech Automation Contents

05



WF-2100

粉體染料半自動秤料系統
Semi - Auto Powder Weighing System

11



WF-2200

倉儲式 粉體染料半自動秤料系統
Ware House Type - Semi Auto Powder Dyeing System

19



WF-2300-PCW

粉體助劑半自動秤料系統
Semi Auto Powder Chemical Weighing System

23



WF-2300

染色液體助劑半自動計量系統
Liquid Chemical Auto Weighing System

29



WF-2400-FM

質量流量計 染色液體助劑自動計量輸送系統
Mass Flowmeter Type Dyeing Liquid Chemical
Auto Dispensing and Distribution System

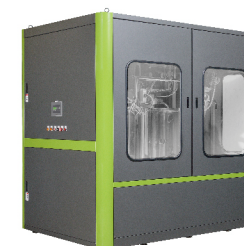
35



WF-2400-LC

荷重單元 染色液體助劑自動計量輸送系統
Load Cell Type Dyeing Liquid Chemical Auto
Weighing and Distribution System

41



WF-2600-LC

荷重單元 定型液體助劑自動計量輸送系統
Load Cell Type Stenter Liquid Chemical Auto
Weighing and Distribution System

47



WF-2700

粉體染料溶解自動輸送系統
Semi Auto Powder Dyestuff Dissolving and
Distribution System

53



WF-2900

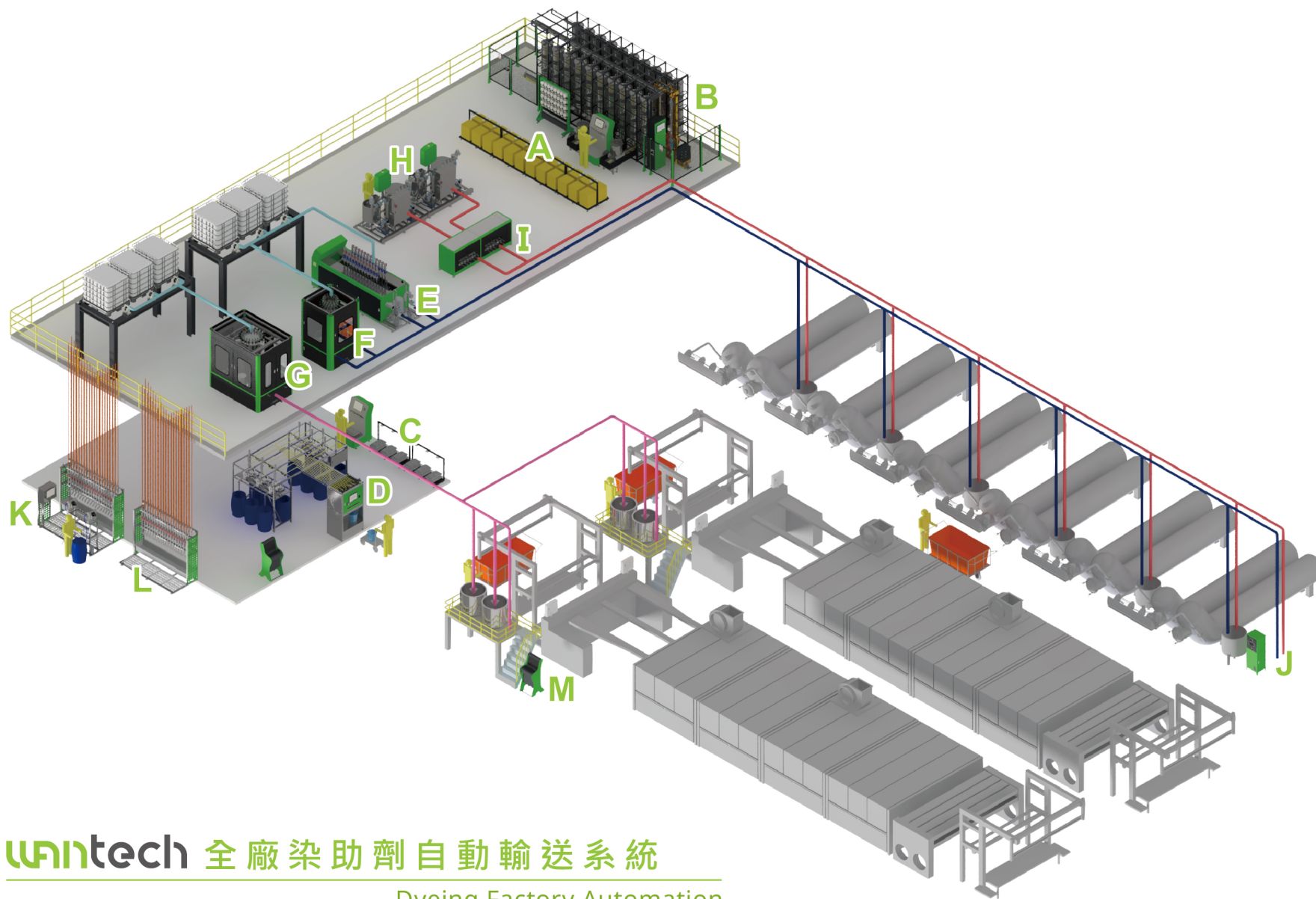
液體染料輸送分配器
Liquid Dyestuff Distribution System

57



WF-1800

PH自動加酸系統
PH Auto Acid Addition System



Wintech 全廠染助劑自動輸送系統
Dyeing Factory Automation

Dyeing Factory Automation 全廠染助劑自動輸送系統

A **WF-2100**
粉體染料半自動秤料系統
Semi - Auto Powder Weighing System

B **WF-2200**
倉儲式 粉體染料半自動秤料系統
Ware House Type Semi - Auto Powder Dyestuff Weighing System

C **WF-2300-PCW**
粉體助劑半自動秤料系統
Semi Auto Powder Chemical Weighing System

D **WF-2300**
染色液體助劑半自動計量系統
Liquid Chemical Auto Weighing System

E **WF-2400-FM**
質量流量計 染色液體助劑自動計量輸送系統
Mass Flowmeter Type Dyeing Liquid Chemical Auto Dispensing and Distribution System

F **WF-2400-LC**
荷重單元 染色液體助劑自動計量輸送系統
Load Cell Type Dyeing Liquid Chemical Auto Weighing and Distribution System

G **WF-2600-LC**
荷重單元 定型液體助劑自動計量輸送系統
Load Cell Type Stenter Liquid Chemical Auto Weighing and Distribution System

H **WF-2700**
粉體染料溶解自動輸送系統
Semi Auto Powder Dyestuff Dissolving and Distribution System

I **WF-2900**
液體染料輸送分配器
Liquid Dyestuff Distribution System

J **WF-1800**
PH自動加酸系統
PH Auto Acid Addition System

K **WF-LCRS**
液體助劑補充站
Liquid Chemical Refill Station

L **WF-LCMD**
液體助劑手動落料站
Liquid Chemical Manual Device Station

M **WF-WS**
工作操作站
Work Station

WF-2100 粉體染料半自動秤料系統
Semi - Auto Powder Weighing System



SERVICE CREATES VALUE
服務創造價值



紅燈 - 取料位置指示燈
Red light indicates receiving dyestuff

綠燈 - 染料歸位指示燈
Green light indicates return of dyestuff



效益分析 Benefits

系統軟體控管秤量準確性
System software control weighing accuracy

降低人為錯誤
Reduce human errors

改善染色再現性
Improve the stability of dyeing process

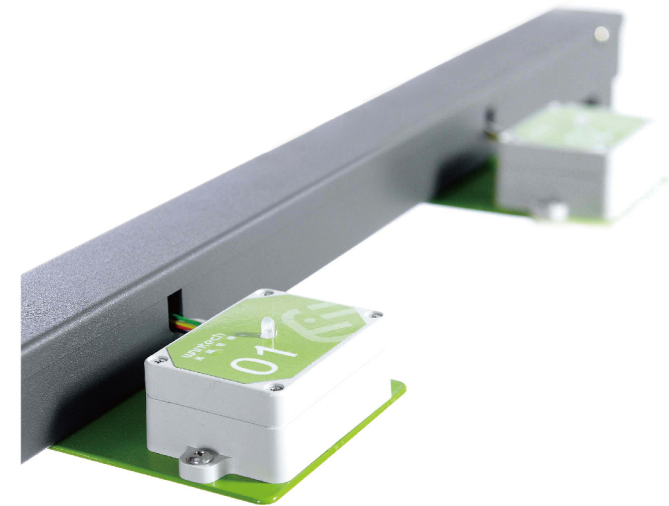
完整紀錄秤量資訊
Complete recording of weighing data

查詢及列印歷史秤量資訊
Query and print weighing history data

改善秤料室工作環境
Improve working environment

WF - 2100 規格表 Specification

品名	規格
秤量主機數量 Number of weighing station	1
3KG 天平 Scale	1
3KG 天平可讀精度 Readability of scale	+ - 0.01g
30KG 天平 Scale	1
30KG 天平可讀精度 Readability of scale	+ - 0.1g
染料位置指示燈 Number of dyestuff position indicator	60 ~ 120 (可客製 Customize)
15吋觸控螢幕數量 Number of 15 inch touch screen	1
無風扇工業電腦數量 Number of Fanless Industrial PC	1
條碼判讀機數量 Number of barcode reader	1
熱感式單據列印機數量 Number of thermal black color ticket printer	1
電控箱數量 Number of control panel	1
電源電壓 Power voltage	220V
電源頻率 Power frequency	50/60 HZ
電源功耗 Power consumption	1 KW



設備細部介紹 Equipment Details



選購配備 Optional equipment



WF-DF-1 染料單層儲存架
Dyestuff single layer frame



WF-DF-2 染料雙層儲存架
Dyestuff double layer frame



WF-DF-2ST 染料雙層階梯式儲存架
Dyestuff double layer frame
with stair type



WF-DF-2DT 染料雙層抽屜式儲存架
Dyestuff double layer frame
with drawer type



選購配備 - 染料不鏽鋼桶 (方型)
Stainless dyestuff bucket (Square)



選購配備 - 染料不鏽鋼桶 (圓型)
Stainless dyestuff bucket (Round)



液體助劑桶擺盪架
Liquid Chemical swing stand



RFID感應裝置 - 感應配件
RFID-Device

WF-2200 倉儲式 粉體染料半自動秤料系統

Ware House Type Semi - Auto Powder Dyestuff Weighing System



BRAND LOYALTY TO INTEGRITY
品牌忠於誠信



特點 Feature

提供兩套進出料系統
Provide two set exit device

全自動機械手臂取送染料
Fully automatic robot arm take - out and return of dyestuff

採用日本三菱PLC控制系統
Using Japan Mitsubishi PLC control system

採用日本三菱伺服馬達控制系統
Using Japan Mitsubishi servo motor control system

採用日本AND天平
Using Japan AND scale

每種染料搭配不銹鋼桶
Each of dyestuff with stainless bucket

條碼判讀機讀取領料單據
Barcode reader reads dyestuff picking list

■ 效益分析 Benefits

系統軟體控管秤量準確性
System software control weighing accuracy

降低人為錯誤
Reduce human errors

改善染色再現性
Improve the stability of dyeing process

完整紀錄秤量資訊
Complete recording of weighing data

查詢及列印歷史秤量資訊
Query and print weighing history data

改善秤料室工作環境
Improve working environment

提高空間利用率
Improve space usage

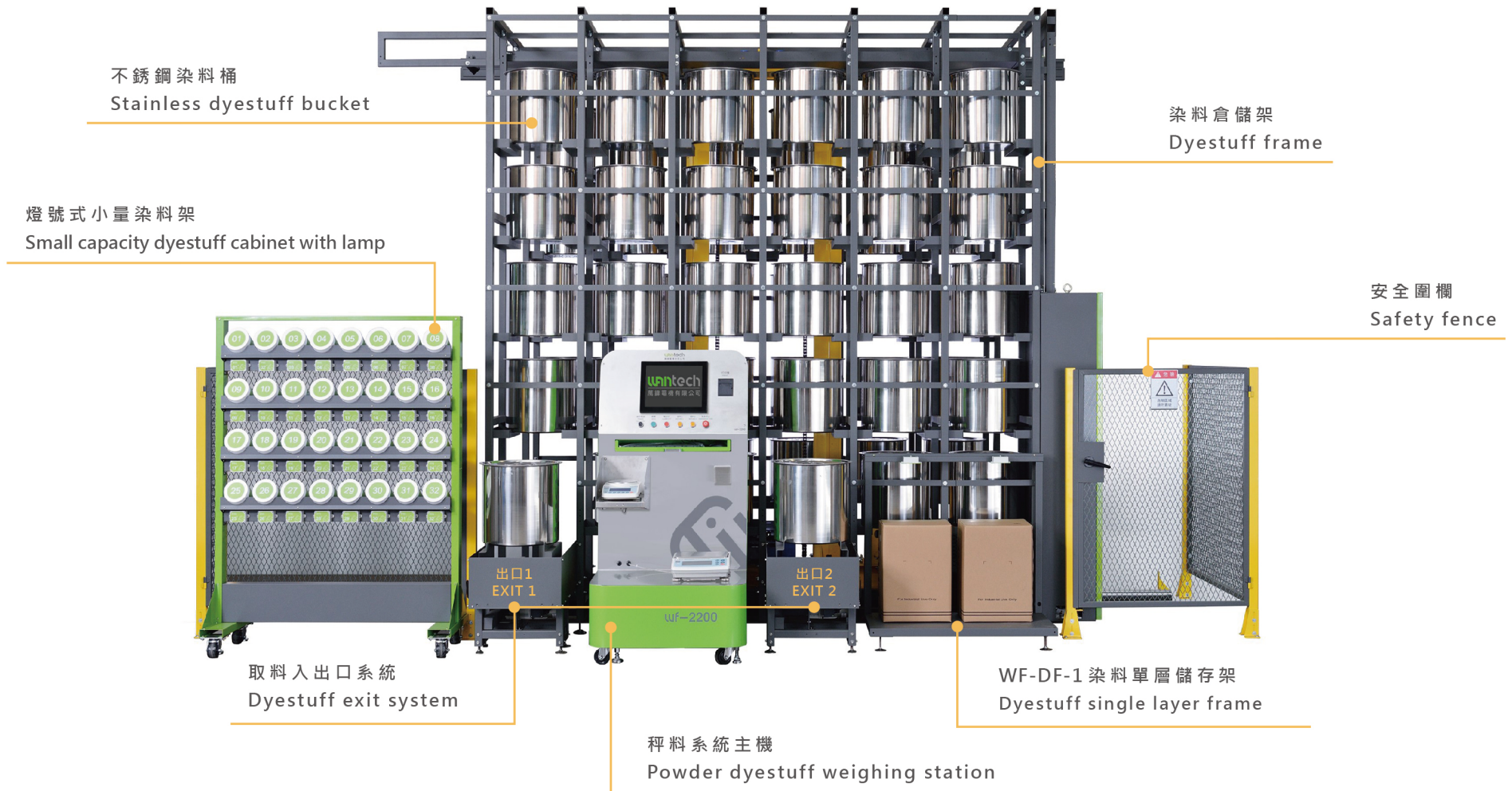
避免染料受潮
Prevent humid of dyestuff

■ WF - 2200 規格表 Specification

品名	規格
秤量主機數量 Number of weighing station	1
3KG 天平 Scale	1
3KG 天平可讀精度 Readability of scale	+ - 0.01g
30KG 天平 Scale	1
30KG 天平可讀精度 Readability of scale	+ - 0.1g
15吋觸控螢幕數量 Number of 15 inch touch screen	1
無風扇工業電腦數量 Number of Fanless Industrial PC	1
條碼判讀機數量 Number of barcode reader	1
熱感式單據列印機數量 Number of thermal black color ticket printer	1

品名	規格
染料倉儲架數量 Number of warehouse dyestuff frame	60~140 (可客製 Customize)
不銹鋼染料桶數量 Number of dyestuff bucket	60~140 (可客製 Customize)
倉儲輸送台車與軌道系統 Robot and rail system	1
取料出入口系統 Dyestuff exit system	2
電控箱數量 Number of control panel	1
人機介面數量 Number of HMI	1
電源電壓 Power voltage	220V
電源頻率 Power frequency	50/60 HZ
電源功耗 Power consumption	8 KW

設備細部介紹 Equipment Details



日本PROFACE操作人機介面
Japan Proface HMI Lcd monitor

倉儲系統控制箱
Control panel



倉儲輸送台車與軌道系統
Mechanical robot and rail system



日本三菱伺服馬達控制系統
Japan Mitsubishi servo motor

設備細部介紹 Equipment Details



研華無風扇工業電腦
ADVANTECH Fanless PC



三菱PLC控制系統
Mitsubishi PLC Control System

日本AND精密電子式天平 (3 Kg, TOLERANCE 0.01g)
Japan AND Type electronic scale

日本AND精密電子式天平 (30 Kg, TOLERANCE 0.1g)
Japan AND Type electronic scale



15吋彩色螢幕
15" Color touch display

熱感式單據列印機
Thermal black color ticket printer

UNITECH 條碼判讀機
UNITECH Industrial bar code reader

滑鼠與鍵盤
Keyboard and Mouse

wf-2200



燈號式小量染料架
Small capacity dyestuff cabinet with lamp

小量染料瓶 (2KG)
Dyestuff small capacity bottle



染料位置指示燈
Dyestuff position indicatory lamp

WF-2300 染色液體助劑半自動計量系統
Liquid Chemical Auto Weighing System



超越自我 追求卓越
BEYOND SELF-SEEKING EXCELLENCE



特點 Feature

設備採用不銹鋼機構
The equipment is made of stainless steel

系統自動控制秤重量
System software control weighing accuracy

採用高精密度荷重單元
Using high precision load cell

採用德國氣壓隔膜泵
Using Germany Air diaphragm pump

可擴充至4套磅秤
Expandable for up to 4 scales

每種助劑搭配獨立管道
Each of chemical with individual pipe

條碼判讀機讀取領料單據
Barcode reader reads chemical picking list

■ 效益分析 Benefits

降低人為錯誤
Reduce human errors

改善染色再現性
Improve the stability of dyeing process

完整紀錄秤量資訊
Complete recording of weighing data

查詢及列印歷史秤量資訊
Query and print weighing history data

改善助劑室工作環境
Improve working environment

提高空間利用率
Improve space usage

避免助劑浪費
Chemical saving

■ WF - 2300 規格表 Specification

品名	WF-2300-1LC	WF-2300-2LC	WF-2300-3LC	WF-2300-4LC
助劑數量 Number of chemical	1~9	1~18	1~27	1~36
助劑計量閥數量 Number of dispense valves	1~9	1~18	1~27	1~36
助劑計量泵浦數量 Number of dispense pump	1~9	1~18	1~27	1~36
秤量主機數量 Number of weighing station	1			
高精度荷重模組數量 Number of load cell	1	2	3	4
高精度荷重模組可讀精度 Readability of load cell	±10g			
計量精度 Accuracy of dispense	±50g			
電控箱數量 Number of control panel	1			
操作箱數量 Number of operation panel	1			
15吋觸控螢幕數量 Number of 15 inch touch screen	1			
無風扇工業電腦數量 Number of Fanless Industrial PC	1			
條碼判讀機數量 Number of barcode reader	1			
熱感式單據列印機數量 Number of thermal black color ticket printer	1			
電源電壓 Power voltage	220V			
電源頻率 Power frequency	50/60HZ			
電源功耗 Power consumption	1KW			

設備細部介紹 Equipment Details



不銹鋼食品級管路助劑入口
Chemical inlet with stainless steel food grade tube



Y型滴液閥
Y type dispensing valve

不銹鋼輸送泵架
Stainless steel pump frame

UPVC 材質緩衝裝置
UPVC Material buffer device

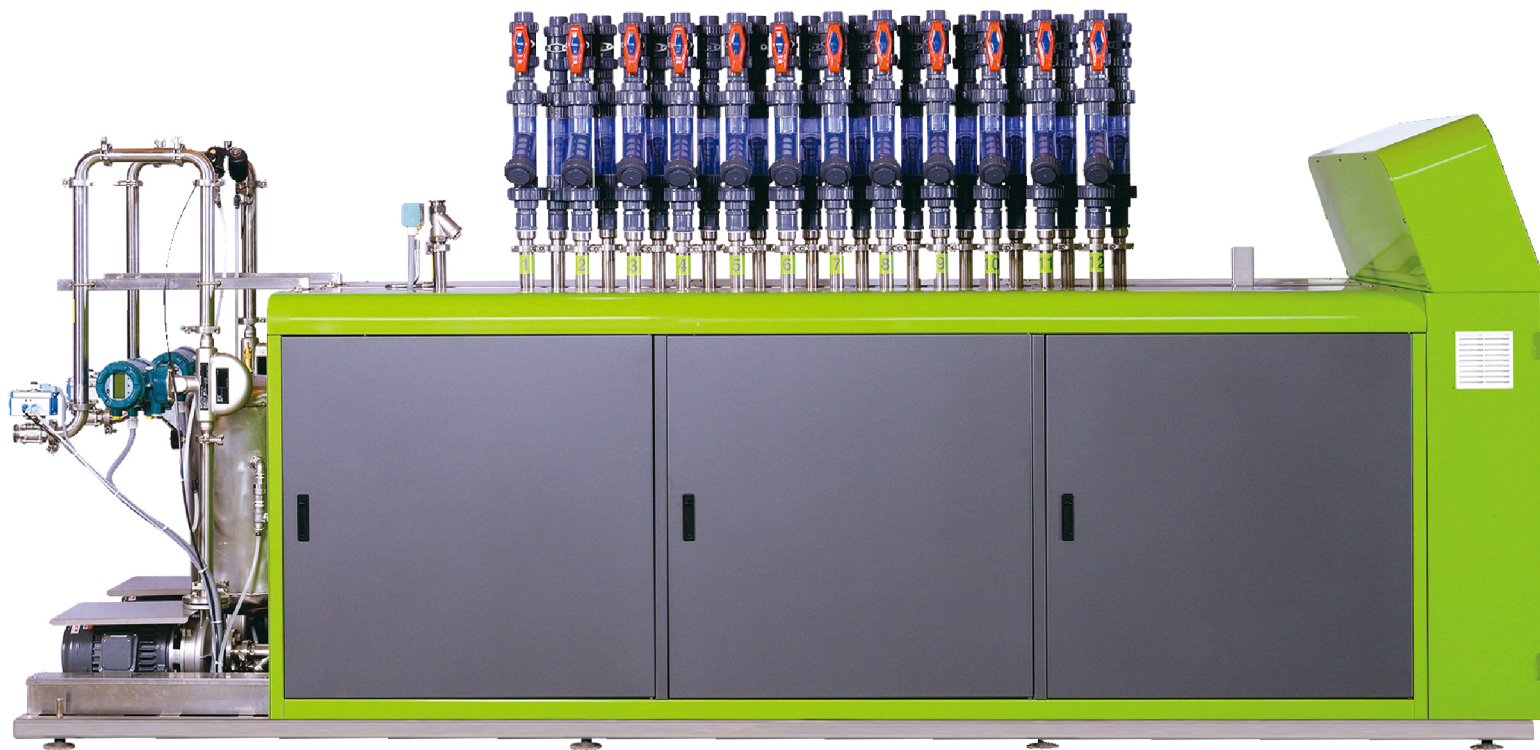


德國VERDER氣壓隔膜輸送泵
Germany VERDER AIR pumps

抽料管包含逆止閥
Suction tube with check valve

WF-2400-FM 質量流量計 染色液體助劑自動計量輸送系統

Mass Flowmeter Type Dyeing Liquid Chemical Auto Dispensing and Distribution System





特點 Feature

設備採用不銹鋼機構
The equipment is made of stainless steel

系統自動控制助劑計量
System software control accuracy

採用日本 YOKOGAWA 質量流量計
Using Japan YOKOGAWA mass flow meter

採用日本三菱 PLC 控制系統
Using Japan Mitsubishi PLC control system

每種助劑搭配獨立管道
Each of chemical with individual pipe

採用台灣在祥輸送泵
Using Taiwan KONPRO pump

不銹鋼三通輸送閥含控制元件
Three - way dosing valve in stainless steel with control kit

管路自動清洗
Automatically pipe rinsing

標準配有一組輔助氣壓儲存桶
Standard with one set of Air storage tank

效益分析 Benefits

計量，輸送，管路清洗一次完成
Weighing, dispensing, pipe rinsing one time completion

手感質量穩定
Hand feel quality stables

提高空間利用率
Improve space usage

完整紀錄秤量資訊
Complete recording of weighing data

計量，輸送標準化
Standardized chemical weighing and dispensing

降低人為錯誤
Reduce human errors

提高工作效率
Improve work efficiency

查詢及列印歷史秤量資訊
Query and print weighing history data

快速精準的輸送
Fast and accurate liquid dispensing

改善助劑室工作環境
Improve working environment

呵護員工健康
Caring for employee health

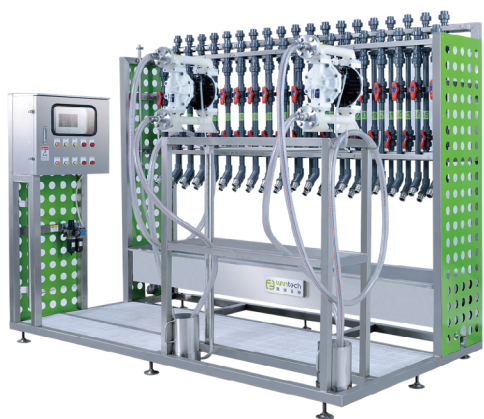
WF - 2400-FM 規格表 Specification

品名	規格
助劑數量 Number of Chemical	1 ~ 32 (可客製 Customize)
助劑計量閥數量 Number of Dispense Valves	1 ~ 32 (可客製 Customize)
高精度質量式流量數量 Number of Mass Flow Meter	1 ~ 2 (可客製 Customize)
質量式流量計精度 Accuracy of Mass Flow Meter	±5g / 2%
助劑輸送泵浦數量 Number of Dispense Pump	1 ~ 2 (可客製 Customize)
電控箱數量 Number of control panel	1
操作箱數量 Number of operation panel	1
人機介面數量 Number of HMI	1
電源電壓 Power voltage	380V
電源頻率 Power frequency	50/60 HZ
電源功耗 Power consumption	2 KW

設備細部介紹 Equipment Details



選購配備 Optional equipment



WF - LCRS 液體助劑補充站
Liquid Chemical Refill Station



WF - LCMD 液體助劑手動落料站
Liquid Chemical Manual Device Station



WF - WS 工作操作站
Work Station

WF-2400-LC 荷重單元 染色液體助劑自動計量輸送系統

Load Cell Type Dyeing Liquid Chemical Auto Weighing and Distribution System





特點 Feature

設備採用不銹鋼機構

The equipment is made of stainless steel

標準配有一組秤重桶與二組混合備藥桶

Standard with one set of weighing tank and two set of mixing tank

系統自動控制秤重量

System software control weighing accuracy

採用高精密度荷重單元

Using high precision load cell

採用日本三菱PLC控制系統

Using Japan Mitsubishi PLC control system

提供兩種液位控制

Provide two type of level control

每種助劑搭配獨立管道

Each of chemical with individual pipe

採用台灣在祥輸送泵

Using Taiwan KONPRO pump

不銹鋼三通輸送閥含控制元件

Three - way dosing valve in stainless steel with control kit

管路自動清洗

Automatically pipe rinsing

標準配有一組輔助氣壓儲存桶

Standard with one set of air storage tank

效益分析 Benefits

秤重，輸送，管路清洗一次完成
Weighing, dispensing, pipe rinsing one time completion

秤重，輸送標準化
Standardized chemical weighing and dispensing

手感質量穩定
Hand feel quality stables

降低人為錯誤
Reduce human errors

改善助劑室工作環境
Improve working environment

提高空間利用率
Improve space usage

提高工作效率
Improve work efficiency

呵護員工健康
Caring for employee health

完整紀錄秤量資訊
Complete recording of weighing data

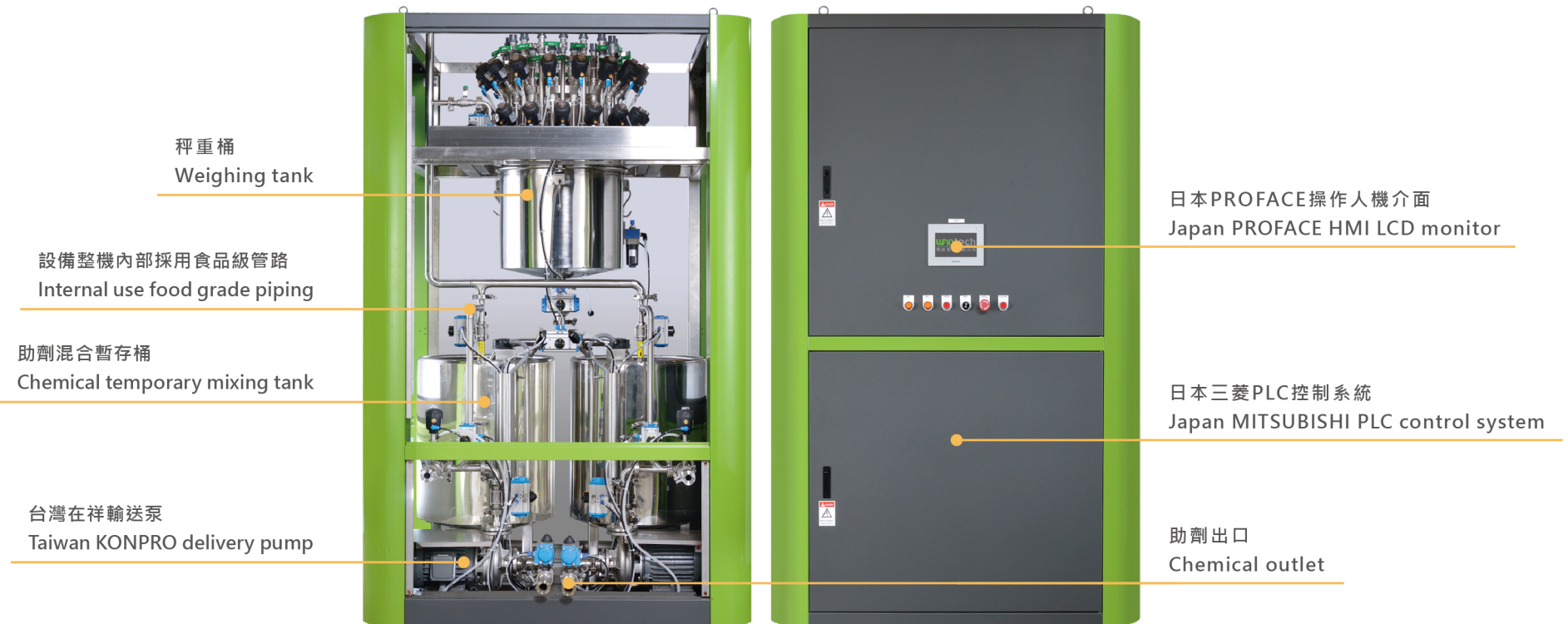
查詢及列印歷史秤量資訊
Query and print weighing history data

WF - 2400-LC 規格表 Specification

品名	規格
助劑數量 Number of Chemical	1 ~ 32 (可客製 Customize)
助劑計量閥數量 Number of Dispense Valves	1 ~ 32 (可客製 Customize)
高精度荷重模組數量 Number of Load Cell	3
高精度荷重模組可讀精度 Readability Of Load Cell	±10g
計量精度 Accuracy of Dispense	±50g
秤重桶 Weighing Tank	1 / 50 L
混合暫存桶數量 Number of Mixing Tank	1~2 (可客製 Customize)
混合暫存桶容量 Capacity of Mixing Tank	100L ~ 500L (可客製 Customize)

品名	規格
助劑輸送泵浦數量 Number of Dispense Pump	1 ~ 2 (可客製 Customize)
電控箱數量 Number of control panel	1
操作箱數量 Number of operation panel	1
人機介面數量 Number of HMI	1
電源電壓 Power voltage	380V
電源頻率 Power frequency	50/60 HZ
電源功耗 Power consumption	2 KW

設備細部介紹 Equipment Details



UPVC 管路助劑入口
UPVC pipeline chemical inlet

荷重單元
Load cell



計量閥
Dispense valves

電極液位控制感知器
Electrode water level sensor



氣泡液位控制感知器
Bubble water level sensor

WF-2600-LC 荷重單元 定型液體助劑自動計量輸送系統
Load Cell Type Stenter Liquid Chemical Auto Weighing and Distribution System





特點 Feature

設備採用不銹鋼機構

The equipment is made of stainless steel

標準配有一組秤重桶與二組混合備藥桶

Standard with one set of weighing tank and two set of mixing tank

系統自動控制秤重量

System software control weighing accuracy

採用高精密度荷重單元

Using high precision load cell

採用日本三菱PLC控制系統

Using Japan Mitusbishi PLC control system

提供兩種液位控制

Provide two type of level control

每種助劑搭配獨立管道

Each of chemical with individual pipe

採用台灣在祥輸送泵

Using Taiwan KONPRO pump

提供兩組攪拌機

Provide two set of mixer

不銹鋼三通輸送閥含控制元件

Three – way dosing valve in stainless steel with control kit

管路自動清洗

Automatically pipe rinsing

標準配有一組輔助氣壓儲存桶

Standard with one set of air storage tank

效益分析 Benefits

秤重, 混合, 輸送, 管路清洗一次完成
Weighing, mixing, dispensing, pipe rinsing one time completion

秤重, 輸送標準化
Standardized chemical weighing and dispensing

手感質量穩定
Hand feel quality stables

降低人為錯誤
Reduce human errors

改善助劑室工作環境
Improve working environment

提高空間利用率
Improve space usage

提高工作效率
Improve work efficiency

呵護員工健康
Caring for employee health

完整紀錄秤量資訊
Complete recording of weighing data

查詢及列印歷史秤量資訊
Query and print weighing history data

WF - 2600-LC 規格表 Specification

品名	規格
助劑數量 Number of Chemical	1 ~ 32 (可客製 Customize)
助劑計量閥數量 Number of Dispense Valves	1 ~ 32 (可客製 Customize)
高精度荷重模組數量 Number of Load Cell	3
高精度荷重模組可讀精度 Readability Of Load Cell	±10g
計量精度 Accuracy of Dispense	±50g
秤重桶 Weighing Tank	1 / 50 L
混合暫存桶數量 Number of Mixing Tank	1~2 (可客製 Customize)
混合暫存桶容量 Capacity of Mixing Tank	100L ~ 500L (可客製 Customize)

品名	規格
攪拌機數量 Number of Mixer	1 ~ 2 (可客製 Customize)
助劑輸送泵浦數量 Number of Dispense Pump	1 ~ 2 (可客製 Customize)
電控箱數量 Number of control panel	1
操作箱數量 Number of operation panel	1
人機介面數量 Number of HMI	1
電源電壓 Power voltage	380V
電源頻率 Power frequency	50/60 HZ
電源功耗 Power consumption	2 KW

設備細部介紹 Equipment Details

台灣在祥輸送泵
Taiwan KONPRO delivery pump



UPVC 管路助劑入口
UPVC pipeline chemical inlet

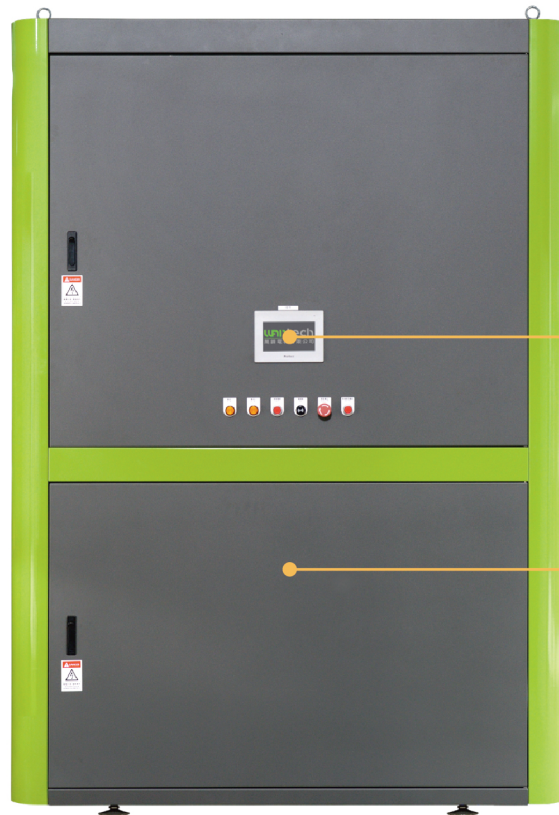
計量閥
Dispense valves

荷重單元
Load cell



日本PROFACE操作人機介面
Japan PROFACE HMI LCD monitor

日本三菱PLC控制系統
Japan MITSUBISHI PLC control system



秤重桶
Weighing tank

攪拌機
Mixer

電極液位控制感知器
Electrode water level sensor

設備整機內部採用食品級管路
Internal use food grade piping



氣泡液位控制感知器
Bubble water level sensor

助劑混合暫存桶
Chemical temporary mixing tank

氣壓儲存桶
Air storage tank

WF-2700 粉體染料溶解自動輸送系統

Semi Auto Powder Dyestuff Dissolving and Distribution System





特點 Feature

設備採用不銹鋼機構
The equipment is made of stainless steel

可依照染料使用量 客製不同尺寸攪拌桶槽
Customized dissolving tank size according to the amount of dyes used

自動控制水量,溫度,攪拌時間與輸送設備編號
Automatically control water volume, temperature, mixing time and equipment number

採用日本三菱PLC控制系統
Using Japan Mitsubishi PLC control system

提供兩種液位控制
Provide two type of level control

提供3種操作箱選項
1. 按鈕操作 2. 人機介面操作 3. 按鈕+人機介面操作
Provide 3 kind of operation panel
1. Button operation 2. HMI operation 3. Button + HMI operation

搭配HMI可提供儲存90組染料溶解配方
Provides 90 sets of dye dissolution formulas with HMI

採用台灣在祥輸送泵
Using Taiwan KONPRO pump

不銹鋼三通輸送閥含控制元件
Three - way dosing valve in stainless steel with control kit

管路自動清洗
Automatically pipe rinsing

■ 效益分析 Benefits

溶解，攪拌，輸送一次完成
Dissolving , mixing , dispensing one time completion

染料溶解標準化
Standardized dissolving

降低人為錯誤
Reduce human errors

改善染色再現性
Improve the stability of dyeing process

改善染料溶解室工作環境
Improve working environment

提高空間利用率
Improve space usage

■ WF - 2700 規格表 Specification

品名	規格
溶解桶數量 Number of dissolving tank	1 ~ 2 (可客製 Customize)
溶解桶容量 Capacity of dissolving tank	60L ~ 500L (可客製 Customize)
入水接口數量 Number of water inlet	1 ~ 3 (可客製 Customize)
攪拌機數量 Number of mixer	1 ~ 2 (可客製 Customize)
染料輸送泵浦數量 Number of dispense pump	1 ~ 2 (可客製 Customize)
電控箱數量 Number of control panel	1
操作箱數量 Number of operation panel	1
人機介面數量 Number of HMI	1
電源電壓 Power voltage	380V
電源頻率 Power frequency	50/60 HZ
電源功耗 Power consumption	4 KW

WF-2700 - 操作箱
Operation Panel



設備細部介紹 Equipment Details



染料溶解攪拌桶槽
Dissolving tank

操作箱
Operation Panel

氣壓儲存桶
Air storage tank

染料溶解攪拌桶槽
Dissolving tank

日本PROFACE人機介面
Japan PROFACE HMI



攪拌機 Mixer

提供3種水源入口
Provide 3 types of water inlets

雙液位控制 (電極棒液位+氣泡式液位)
Provide 2 types of water sensor
(electrode water level sensor + bubble water level sensor)

台灣在祥輸送泵
Taiwan KONPRO delivery pump



日本三菱PLC控制系統
Japan MITSUBISHI PLC control system



MAKE A DIFFERENCE



新北市板橋區大觀路2段37巷282-4號 TEL : +886-2-2275-1096 FAX : +886-2-2275-5355
No.282-4, Ln.37, Sec.2, Dagan Rd., Banqiao_Dist., New_Taipei City 22096, Taiwan (R.O.C.)